

Test Booklet Code

**H2**

**ANKHA**

No. :

This Booklet contains 24 pages.

**Do not open this Test Booklet until you are asked to do so.**

**Important Instructions :**

1. The Answer Sheet is inside this Test Booklet. When you are directed to open the Test Booklet, take out the Answer Sheet and fill in the particulars on **side-1** and **side-2** carefully with **blue/black** ball point pen only.
2. The test is of **3 hours** duration and Test Booklet contains **180** questions. Each question carries **4** marks. For each correct response, the candidate will get **4** marks. For each incorrect response, **one mark** will be deducted from the total scores. The maximum marks are **720**.
3. Use **Blue/Black Ball Point Pen only** for writing particulars on this page/marking responses.
4. Rough work is to be done on the space provided for this purpose in the Test Booklet only.
5. **On completion of the test, the candidate must hand over the Answer Sheet to the invigilator before leaving the Room/Hall. The candidates are allowed to take away this Test Booklet with them.**
6. The CODE for this Booklet is **H2**. Make sure that the CODE printed on **Side-2** of the Answer Sheet is the same as that on this Test Booklet. In case of discrepancy, the candidate should immediately report the matter to the Invigilator for replacement of both the Test Booklet and the Answer Sheet.
7. The candidates should ensure that the Answer Sheet is not folded. Do not make any stray marks on the Answer Sheet. Do not write your Roll No. anywhere else except in the specified space in the Test Booklet/ Answer Sheet.
8. Use of white fluid for correction is **NOT** permissible on the Answer Sheet.
9. Each candidate must show on demand his/her Admit Card to the Invigilator.
10. No candidate, without special permission of the Superintendent or Invigilator, would leave his/her seat.
11. The candidates should not leave the Examination Hall without handing over their Answer Sheet to the Invigilator on duty and sign the Attendance Sheet twice. **Cases where a candidate has not signed the Attendance Sheet second time will be deemed not to have handed over the Answer Sheet and dealt with as an unfair means case.**
12. Use of Electronic/Manual Calculator is prohibited.
13. The candidates are governed by all Rules and Regulations of the examination with regard to their conduct in the Examination Hall. All cases of unfair means will be dealt with as per Rules and Regulations of this examination.
14. No part of the Test Booklet and Answer Sheet shall be detached under any circumstances.
15. The candidates will write the Correct Test Booklet Code as given in the Test Booklet/Answer Sheet in the Attendance Sheet.

Name of the Candidate (in Capitals) : \_\_\_\_\_

Roll Number : in figures \_\_\_\_\_

: in words \_\_\_\_\_

Centre of Examination (in Capitals) : \_\_\_\_\_

Candidate's Signature : \_\_\_\_\_ Invigilator's Signature : \_\_\_\_\_

Facsimile signature stamp of

Centre Superintendent : \_\_\_\_\_

1. The number of protons, neutrons and electrons in  ${}_{71}^{175}\text{Lu}$ , respectively, are :

- (1) 175, 104 and 71  
 (2) 71, 104 and 71  
 (3) 104, 71 and 71  
 (4) 71, 71 and 104

2. The following metal ion activates many enzymes, participates in the oxidation of glucose to produce ATP and with Na, is responsible for the transmission of nerve signals.

- (1) Potassium  
 (2) Iron  
 (3) Copper  
 (4) Calcium

3. Which of the following is not correct about carbon monoxide ?

- (1) It is produced due to incomplete combustion.  
 (2) It forms carboxyhaemoglobin.  
 (3) It reduces oxygen carrying ability of blood.  
 (4) The carboxyhaemoglobin (haemoglobin bound to CO) is less stable than oxyhaemoglobin.

4. Which one of the followings has maximum number of atoms ?

- (1) 1 g of Li(s) [Atomic mass of Li = 7]  
 (2) 1 g of Ag(s) [Atomic mass of Ag = 108]  
 (3) 1 g of Mg(s) [Atomic mass of Mg = 24]  
 (4) 1 g of  $\text{O}_2$ (g) [Atomic mass of O = 16]

5. Paper chromatography is an example of :

- (1) Column chromatography  
 (2) Adsorption chromatography  
 (3) Partition chromatography  
 (4) Thin layer chromatography

6. Which of the following is a natural polymer ?

- (1) poly (Butadiene-acrylonitrile)  
 (2) cis-1,4-polyisoprene  
 (3) poly (Butadiene-styrene)  
 (4) polybutadiene

7. The mixture which shows positive deviation from Raoult's law is :

- (1) Chloroethane + Bromoethane  
 (2) Ethanol + Acetone  
 (3) Benzene + Toluene  
 (4) Acetone + Chloroform

8. The calculated spin only magnetic moment of  $\text{Cr}^{2+}$  ion is :

- (1) 2.84 BM  
 (2) 3.87 BM  
 (3) 4.90 BM  
 (4) 5.92 BM

9. A tertiary butyl carbocation is more stable than secondary butyl carbocation because of which of the following ?

- (1) Hyperconjugation  
 (2) -I effect of  $-\text{CH}_3$  groups  
 (3) +R effect of  $-\text{CH}_3$  groups  
 (4) -R effect of  $-\text{CH}_3$  groups

10. The correct option for free expansion of an ideal gas under adiabatic condition is :

- (1)  $q > 0$ ,  $\Delta T > 0$  and  $w > 0$   
 (2)  $q = 0$ ,  $\Delta T = 0$  and  $w = 0$   
 (3)  $q = 0$ ,  $\Delta T < 0$  and  $w > 0$   
 (4)  $q < 0$ ,  $\Delta T = 0$  and  $w = 0$

11. Elimination reaction of 2-Bromo-pentane to form pent-2-ene is :

- (a)  $\beta$ -Elimination reaction  
 (b) Follows Zaitsev rule  
 (c) Dehydrohalogenation reaction  
 (d) Dehydration reaction  
 (1) (a), (b), (d)  
 (2) (a), (b), (c)  
 (3) (a), (c), (d)  
 (4) (b), (c), (d)



12. Identify the correct statements from the following:

- (a)  $\text{CO}_2(\text{g})$  is used as refrigerant for ice-cream and frozen food.  
 (b) The structure of  $\text{C}_{60}$  contains twelve six carbon rings and twenty five carbon rings.  
 (c) ZSM-5, a type of zeolite, is used to convert alcohols into gasoline.  
 (d) CO is colorless and odourless gas.
- (1) (c) and (d) only  
 (2) (a), (b) and (c) only  
 (3) (a) and (c) only  
 (4) (b) and (c) only

13. Which of the following is the correct order of increasing field strength of ligands to form coordination compounds?

- (1)  $\text{CN}^- < \text{C}_2\text{O}_4^{2-} < \text{SCN}^- < \text{F}^-$   
 (2)  $\text{SCN}^- < \text{F}^- < \text{C}_2\text{O}_4^{2-} < \text{CN}^-$   
 (3)  $\text{SCN}^- < \text{F}^- < \text{CN}^- < \text{C}_2\text{O}_4^{2-}$   
 (4)  $\text{F}^- < \text{SCN}^- < \text{C}_2\text{O}_4^{2-} < \text{CN}^-$

14. Hydrolysis of sucrose is given by the following reaction.



If the equilibrium constant ( $K_c$ ) is  $2 \times 10^{13}$  at 300 K, the value of  $\Delta_r G^\ominus$  at the same temperature will be:

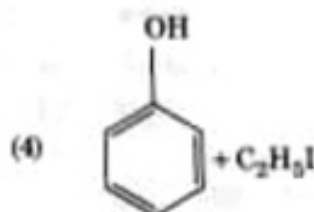
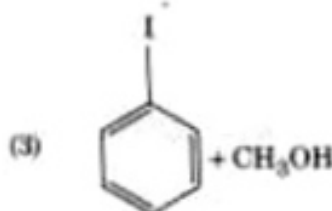
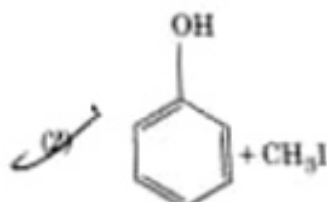
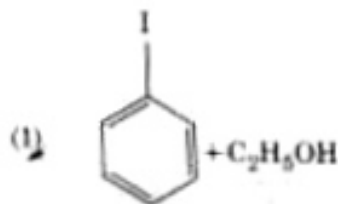
- (1)  $-8.314 \text{ J mol}^{-1} \text{ K}^{-1} \times 300 \text{ K} \times \ln(4 \times 10^{13})$   
 (2)  $-8.314 \text{ J mol}^{-1} \text{ K}^{-1} \times 300 \text{ K} \times \ln(2 \times 10^{13})$   
 (3)  $8.314 \text{ J mol}^{-1} \text{ K}^{-1} \times 300 \text{ K} \times \ln(2 \times 10^{13})$   
 (4)  $8.314 \text{ J mol}^{-1} \text{ K}^{-1} \times 300 \text{ K} \times \ln(3 \times 10^{13})$

15. Identify the incorrect match.

Name	IUPAC Official Name
(a) Unnilunium	(i) Mendeleevium
(b) Unniltrium	(ii) Lawrencium
(c) Unnilhexium	(iii) Seaborgium
(d) Unununnium	(iv) Darmstadtium

(1) (d), (iv)  
 (2) (a), (i)  
 (3) (b), (ii)  
 (4) (c), (iii)

16. Anisole on cleavage with HI gives:



17. Identify the correct statement from the following:

- (1) Pig iron can be moulded into a variety of shapes.  
 (2) Wrought iron is impure iron with 4% carbon.  
 (3) Blister copper has blistered appearance due to evolution of  $\text{CO}_2$ .  
 (4) Vapour phase refining is carried out for Nickel by Van Arkel method.

18. For the reaction,  $2\text{Cl}(\text{g}) \rightarrow \text{Cl}_2(\text{g})$ , the correct option is:

- (1)  $\Delta_r H < 0$  and  $\Delta_r S < 0$   
 (2)  $\Delta_r H > 0$  and  $\Delta_r S > 0$   
 (3)  $\Delta_r H > 0$  and  $\Delta_r S < 0$   
 (4)  $\Delta_r H < 0$  and  $\Delta_r S > 0$

MISSING PAGE 4

MISSING PAGE 5

MISSING PAGE 6

MISSING PAGE 7

52. The process responsible for facilitating loss of water in liquid form from the tip of grass blades at night and in early morning is :
- (1) Plasmolysis
  - (2) Transpiration
  - (3) Root pressure
  - (4) Imbibition
53. Identify the **wrong** statement with reference to the gene **I** that controls ABO blood groups.
- (1) Allele **I** does not produce any sugar.
  - (2) The gene **I** has three alleles.
  - (3) A person will have only two of the three alleles.
  - (4) When  $I^A$  and  $I^B$  are present together, they express same type of sugar.
54. Dissolution of the synaptonemal complex occurs during :
- (1) Leptotene
  - (2) Pachytene
  - (3) Zygotene
  - (4) Diplotene
55. Which of the following is put into Anaerobic sludge digester for further sewage treatment ?
- (1) Activated sludge
  - (2) Primary sludge
  - (3) Floating debris
  - (4) Effluents of primary treatment
56. Which of the following statements are **true** for the phylum-Chordata ?
- (a) In Urochordata notochord extends from head to tail and it is present throughout their life.
  - (b) In Vertebrata notochord is present during the embryonic period only.
  - (c) Central nervous system is dorsal and hollow.
  - (d) Chordata is divided into 3 subphyla : Hemichordata, Tunicata and Cephalochordata.
- (1) (b) and (c)
  - (2) (d) and (c)
  - (3) (c) and (a)
  - (4) (a) and (b)
57. Select the option including all sexually transmitted diseases.
- (1) Cancer, AIDS, Syphilis
  - (2) Gonorrhoea, Syphilis, Genital herpes
  - (3) Gonorrhoea, Malaria, Genital herpes
  - (4) AIDS, Malaria, Filaria
58. Cuboidal epithelium with brush border of microvilli is found in :
- (1) eustachian tube
  - (2) lining of intestine
  - (3) ducts of salivary glands
  - (4) proximal convoluted tubule of nephron
59. The transverse section of a plant shows following anatomical features :
- (a) Large number of scattered vascular bundles surrounded by bundle sheath.
  - (b) Large conspicuous parenchymatous ground tissue.
  - (c) Vascular bundles conjoint and closed.
  - (d) Phloem parenchyma absent.
- Identify the category of plant and its part :
- (1) Dicotyledonous root
  - (2) Monocotyledonous stem
  - (3) Monocotyledonous root
  - (4) Dicotyledonous stem
60. By which method was a new breed 'Hisardale' of sheep formed by using Bikaneri ewes and Marino rams ?
- (1) Inbreeding
  - (2) Out crossing
  - (3) Mutational breeding
  - (4) Cross breeding
61. Montreal protocol was signed in 1987 for control of :
- (1) Disposal of e-wastes
  - (2) Transport of Genetically modified organisms from one country to another
  - (3) Emission of ozone depleting substances
  - (4) Release of Green House gases



62. Match the following columns and select the correct option.

Column - I		Column - II	
(a) Bt cotton	(i) Gene therapy		
(b) Adenosine deaminase deficiency	(ii) Cellular defence		
(c) RNAi	(iii) Detection of HIV infection		
(d) PCR	(iv) <i>Bacillus thuringiensis</i>		

- |                | (a)   | (b)   | (c)   | (d)   |
|----------------|-------|-------|-------|-------|
| (1)            | (i)   | (ii)  | (iii) | (iv)  |
| <del>(2)</del> | (iv)  | (i)   | (ii)  | (iii) |
| (3)            | (iii) | (ii)  | (i)   | (iv)  |
| (4)            | (i)   | (iii) | (iv)  | (i)   |

63. According to Robert May, the global species diversity is about :

- ~~(1)~~ 7 million
- (2) 1.5 million
- (3) 20 million
- (4) 50 million

64. Choose the correct pair from the following :

- |                            |  |
|----------------------------|--|
| (1) Exonucleases -         | Make cuts at specific positions within DNA |
| <del>(2)</del> Ligases -   | Join the two DNA molecules                 |
| (3) Polymerases -          | Break the DNA into fragments               |
| <del>(4)</del> Nucleases - | Separate the two strands of DNA            |

65. Identify the wrong statement with regard to Restriction Enzymes.

- ~~(1)~~ Sticky ends can be joined by using DNA ligase.
- ~~(2)~~ Each restriction enzyme functions by inspecting the length of a DNA sequence.
- (3) They cut the strand of DNA at palindromic sites.
- (4) They are useful in genetic engineering.

66. Match the organism with its use in biotechnology.

(a) <i>Bacillus thuringiensis</i>	(i) Cloning vector
(b) <i>Thermus aquaticus</i>	(ii) Construction of first rDNA molecule
(c) <i>Agrobacterium tumefaciens</i>	(iii) DNA polymerase
(d) <i>Salmonella typhimurium</i>	<del>(iv)</del> Cry proteins

Select the correct option from the following.

- |                | (a)   | (b)   | (c)   | (d)  |
|----------------|-------|-------|-------|------|
| (1)            | (iii) | (iv)  | (i)   | (ii) |
| <del>(2)</del> | (ii)  | (iv)  | (iii) | (i)  |
| (3)            | (iv)  | (iii) | (i)   | (ii) |
| (4)            | (iii) | (ii)  | (iv)  | (i)  |

67. Match the following columns and select the correct option.

Column - I		Column - II	
(a) Organ of Corti	(i) Connects middle ear and pharynx		
(b) Cochlea	(ii) Coiled part of the labyrinth		
(c) Eustachian tube	(iii) Attached to the oval window		
(d) Stapes	(iv) Located on the basilar membrane		

- |                | (a)   | (b)   | (c)  | (d)   |
|----------------|-------|-------|------|-------|
| (1)            | (i)   | (ii)  | (iv) | (iii) |
| <del>(2)</del> | (ii)  | (iii) | (i)  | (iv)  |
| (3)            | (iii) | (i)   | (iv) | (ii)  |
| (4)            | (iv)  | (ii)  | (i)  | (iii) |

68. The QRS complex in a standard ECG represents :

- (1) Repolarisation of ventricles
- (2) Repolarisation of auricles
- (3) Depolarisation of auricles
- ~~(4)~~ Depolarisation of ventricles

69. Identify the substances having glycosidic bond and peptide bond, respectively in their structure :

- ~~(1)~~ Inulin, insulin
- (2) Chitin, cholesterol
- (3) Glycerol, trypsin
- (4) Cellulose, lecithin

70. Which of the following regions of the globe exhibits highest species diversity?

- (1) Amazon forests
- (2) Western Ghats of India
- (3) Madagascar
- (4) Himalayas

71. Match the following columns and select the correct option.

Column - I		Column - II	
(a) Placenta	(i)	Androgens	
(b) Zona pellucida	(ii)	Human Chorionic Gonadotropin (hCG)	
(c) Bulbo-urethral glands	(iii)	Layer of the ovum	
(d) Leydig cells	(iv)	Lubrication of the Penis	

- |     | (a)   | (b)   | (c)  | (d)   |
|-----|-------|-------|------|-------|
| (1) | (ii)  | (iii) | (iv) | (i)   |
| (2) | (iv)  | (iii) | (i)  | (ii)  |
| (3) | (i)   | (iv)  | (ii) | (iii) |
| (4) | (iii) | (ii)  | (iv) | (i)   |

72. Match the following columns and select the correct option.

Column - I		Column - II	
(a) Pituitary gland	(i)	Grave's disease	
(b) Thyroid gland	(ii)	Diabetes mellitus	
(c) Adrenal gland	(iii)	Diabetes insipidus	
(d) Pancreas	(iv)	Addison's disease	

- |     | (a)   | (b)   | (c)  | (d)   |
|-----|-------|-------|------|-------|
| (1) | (ii)  | (i)   | (iv) | (iii) |
| (2) | (iv)  | (iii) | (i)  | (ii)  |
| (3) | (iii) | (ii)  | (i)  | (iv)  |
| (4) | (iii) | (i)   | (iv) | (ii)  |

73. Which of the following is not an inhibitory substance governing seed dormancy?

- (1) Para-ascorbic acid
- (2) Gibberellic acid
- (3) Abscisic acid
- (4) Phenolic acid

74. If the head of cockroach is removed, it may live for few days because :

- (1) the head holds a 1/3<sup>rd</sup> of a nervous system while the rest is situated along the dorsal part of its body.
- (2) the supra-oesophageal ganglia of the cockroach are situated in ventral part of abdomen.
- (3) the cockroach does not have nervous system.
- (4) the head holds a small proportion of a nervous system while the rest is situated along the ventral part of its body.

75. The number of substrate level phosphorylations in one turn of citric acid cycle is :

- (1) Three
- (2) Zero
- (3) One
- (4) Two

76. The process of growth is maximum during :

- (1) Dormancy
- (2) Log phase
- (3) Lag phase
- (4) Senescence

77. How many true breeding pea plant varieties did Mendel select as pairs, which were similar except in one character with contrasting traits?

- (1) 8
- (2) 4
- (3) 2
- (4) 14

78. In gel electrophoresis, separated DNA fragments can be visualized with the help of :

- (1) Ethidium bromide in infrared radiation
- (2) Acetocarmine in bright blue light
- (3) Ethidium bromide in UV radiation
- (4) Acetocarmine in UV radiation

79. Identify the basic amino acid from the following

- (1) Valine
- (2) Tyrosine
- (3) Glutamic Acid
- (4) Lysine



80. Match the following with respect to meiosis :

- |                |                     |
|----------------|---------------------|
| (a) Zygotene   | (i) Terminalization |
| (b) Pachytene  | (ii) Chiasmata      |
| (c) Diplotene  | (iii) Crossing over |
| (d) Diakinesis | (iv) Synapsis       |

Select the **correct** option from the following :

- |     |       |       |       |       |
|-----|-------|-------|-------|-------|
|     | (a)   | (b)   | (c)   | (d)   |
| (1) | (ii)  | (iv)  | (iii) | (i)   |
| (2) | (iii) | (iv)  | (i)   | (ii)  |
| (3) | (iv)  | (iii) | (i)   | (i)   |
| (4) | (i)   | (ii)  | (iv)  | (iii) |

81. Match the following diseases with the causative organism and select the **correct** option.

Column - I	Column - II
(a) Typhoid	(i) <i>Wuchereria</i>
(b) Pneumonia	(ii) <i>Plasmodium</i>
(c) Filariasis	(iii) <i>Salmonella</i>
(d) Malaria	(iv) <i>Haemophilus</i>

- |     |       |       |       |       |
|-----|-------|-------|-------|-------|
|     | (a)   | (b)   | (c)   | (d)   |
| (1) | (iv)  | (i)   | (ii)  | (iii) |
| (2) | (i)   | (iii) | (ii)  | (iv)  |
| (3) | (iii) | (iv)  | (i)   | (ii)  |
| (4) | (ii)  | (i)   | (iii) | (iv)  |

82. Match the following concerning essential elements and their functions in plants :

(a) Iron	(i) Photolysis of water
(b) Zinc	(ii) Pollen germination
(c) Boron	(iii) Required for chlorophyll biosynthesis
(d) Manganese	(iv) IAA biosynthesis

Select the **correct** option :

- |     |       |       |      |       |
|-----|-------|-------|------|-------|
|     | (a)   | (b)   | (c)  | (d)   |
| (1) | (iv)  | (i)   | (ii) | (iii) |
| (2) | (ii)  | (i)   | (iv) | (iii) |
| (3) | (iv)  | (iii) | (ii) | (i)   |
| (4) | (iii) | (iv)  | (ii) | (i)   |

83. Which of the following would help in prevention of diuresis?

- (1) Decrease in secretion of renin by JG cells
- (2) More water reabsorption due to undersecretion of ADH
- (3) Reabsorption of  $\text{Na}^+$  and water from renal tubules due to aldosterone
- (4) Atrial natriuretic factor causes vasoconstriction

84. Snow-blindness in Antarctic regions is due to :

- (1) Damage to retina caused by infra-red rays
- (2) Freezing of fluids in the eye by low temperature
- (3) Inflammation of cornea due to high dose of UV-B radiation
- (4) High reflection of light from snow

85. Bt cotton variety that was developed by the introduction of toxin gene of *Bacillus thuringiensis* (Bt) is resistant to :

- (1) Insect predators
- (2) Insect pests
- (3) Fungal diseases
- (4) Plant nematodes

86. Select the **correct** events that occur during inspiration.

- (a) Contraction of diaphragm
  - (b) Contraction of external inter-costal muscles
  - (c) Pulmonary volume decreases
  - (d) Intra pulmonary pressure increases
- (F) only (d)
- (2) (a) and (b)
  - (3) (c) and (d)
  - (4) (a), (b) and (d)

87. Which of the following is **correct** about viroids?

- (1) They have free DNA without protein coat.
- (2) They have RNA with protein coat.
- (3) They have free RNA without protein coat.
- (4) They have DNA with protein coat.

88. Match the following columns and select the correct option.

Column - I		Column - II	
(a) Floating Ribs	(i)	Located between second and seventh ribs	
(b) Acromion	(ii)	Head of the Humerus	
(c) Scapula	(iii)	Clavicle	
(d) Glenoid cavity	(iv)	Do not connect with the sternum	

- |     | (a)   | (b)   | (c)  | (d)   |
|-----|-------|-------|------|-------|
| (1) | (iv)  | (iii) | (i)  | (ii)  |
| (2) | (ii)  | (iv)  | (i)  | (iii) |
| (3) | (i)   | (iii) | (ii) | (iv)  |
| (4) | (iii) | (ii)  | (iv) | (i)   |

89. Match the following columns and select the correct option.

Column - I		Column - II	
(a) Gregarious, polyphagous pest	(i)	<i>Asterias</i>	
(b) Adult with radial symmetry and larva with bilateral symmetry	(ii)	Scorpion	
(c) Book lungs	(iii)	<i>Ctenoplana</i>	
(d) Bioluminescence	(iv)	<i>Locusta</i>	

- |     | (a)   | (b)   | (c)   | (d)   |
|-----|-------|-------|-------|-------|
| (1) | (ii)  | (i)   | (iii) | (iv)  |
| (2) | (i)   | (iii) | (ii)  | (iv)  |
| (3) | (iv)  | (i)   | (ii)  | (iii) |
| (4) | (iii) | (ii)  | (i)   | (iv)  |

90. Ray florets have :

- (1) Half inferior ovary
- (2) Inferior ovary
- (3) Superior ovary
- (4) Hypogynous ovary

91. In which of the following techniques, the embryos are transferred to assist those females who cannot conceive ?

- (1) GIFT and ICSI
- (2) ZIFT and IUT
- (3) GIFT and ZIFT
- (4) ICSI and ZIFT

92. Match the following columns and select the correct option.

Column - I		Column - II	
(a) <i>Clostridium butylicum</i>	(i)	Cyclosporin-A	
(b) <i>Trichoderma polysporum</i>	(ii)	Butyric Acid	
(c) <i>Monascus purpureus</i>	(iii)	Citric Acid	
(d) <i>Aspergillus niger</i>	(iv)	Blood cholesterol lowering agent	

- |     | (a)   | (b)   | (c)  | (d)   |
|-----|-------|-------|------|-------|
| (1) | (iv)  | (iii) | (ii) | (i)   |
| (2) | (iii) | (iv)  | (ii) | (i)   |
| (3) | (ii)  | (i)   | (iv) | (iii) |
| (4) | (i)   | (ii)  | (iv) | (iii) |

93. The plant parts which consist of two generations, one within the other :

- (a) Pollen grains inside the anther
  - (b) Germinated pollen grain with two male gametes
  - (c) Seed inside the fruit
  - (d) Embryo sac inside the ovule
- (1) (a) and (d)
  - (2) (a) only
  - (3) (a), (b) and (c)
  - (4) (c) and (d)

94. Which of the following is not an attribute of a population ?

- (1) Species interaction
- (2) Sex ratio
- (3) Natality
- (4) Mortality

95. The sequence that controls the copy number of the linked DNA in the vector, is termed :

- (1) Recognition site
- (2) Selectable marker
- (3) Ori site
- (4) Palindromic sequence

96. The specific palindromic sequence which is recognized by EcoRV is :

- (1) 5' - GGATCC - 3'  
3' - CCTAGG - 5'
- (2) 5' - GAATTC - 3'  
3' - CTTAAG - 5'
- (3) 5' - GGAACC - 3'  
3' - CCTTGG - 5'
- (4) 5' - CTTAAG - 3'  
3' - GAATTC - 5'



97. Experimental verification of the chromosomal theory of inheritance was done by:

- (1) Morgan
- (2) Mendel
- (3) Sutton
- (4) Boveri

98. The product(s) of reaction catalyzed by nitrogenase in root nodules of leguminous plants is/are:

- (1) Ammonia and hydrogen
- (2) Ammonia alone
- (3) Nitrate alone
- (4) Ammonia and oxygen

99. Match the following columns and select the correct option.

## Column - I

## Column - II

- |                                |                      |
|--------------------------------|----------------------|
| (a) 6 - 15 pairs of gill slits | (i) Trygon           |
| (b) Heterocercal caudal fin    | (ii) Cyclostomes     |
| (c) Air Bladder                | (iii) Chondrichthyes |
| (d) Poison sting               | (iv) Osteichthyes    |

(a) (b) (c) (d)

- (1) (i) (iv) (iii) (ii)
- (2) (ii) (iii) (iv) (i)
- (3) (iii) (iv) (i) (ii)
- (4) (iv) (ii) (iii) (i)

100. Identify the incorrect statement.

- (1) Due to deposition of tannins, resins, oils etc., heart wood is dark in colour.
- (2) Heart wood does not conduct water but gives mechanical support.
- (3) Sapwood is involved in conduction of water and minerals from root to leaf.
- (4) Sapwood is the innermost secondary xylem and is lighter in colour.

101. In relation to Gross primary productivity and Net primary productivity of an ecosystem, which one of the following statements is correct?

- (1) There is no relationship between Gross primary productivity and Net primary productivity.
- (2) Gross primary productivity is always less than net primary productivity.
- (3) Gross primary productivity is always more than net primary productivity.
- (4) Gross primary productivity and Net primary productivity are one and same.

102. Which of the following refer to correct example(s) of organisms which have evolved due to changes in environment brought about by anthropogenic action?

- (a) Darwin's Finches of Galapagos islands.
  - (b) Herbicide resistant weeds.
  - (c) Drug resistant eukaryotes.
  - (d) Man-created breeds of domesticated animals like dogs.
- (1) only (d)
  - (2) only (a)
  - (3) (a) and (c)
  - (4) (b), (c) and (d)

103. Which of the following hormone levels will cause release of ovum (ovulation) from the graffian follicle?

- (1) Low concentration of FSH
- (2) High concentration of Estrogen
- (3) High concentration of Progesterone
- (4) Low concentration of LH

104. In light reaction, plastoquinone facilitates the transfer of electrons from:

- (1) PS-I to ATP synthase
- (2) PS-II to Cyt<sub>b</sub><sub>6</sub>f complex
- (3) Cyt<sub>b</sub><sub>6</sub>f complex to PS-I
- (4) PS-I to NADP<sup>+</sup>



105. Which of the following statements is **not correct**?
- (1) Genetically engineered insulin is produced in *E. Coli*.
  - (2) In man insulin is synthesised as a proinsulin.
  - (3) The proinsulin has an extra peptide called C-peptide.
  - (4) The functional insulin has A and B chains linked together by hydrogen bonds.
106. From his experiments, S.L. Miller produced amino acids by mixing the following in a closed flask :
- (1)  $\text{CH}_3$ ,  $\text{H}_2$ ,  $\text{NH}_3$  and water vapor at  $600^\circ\text{C}$
  - (2)  $\text{CH}_4$ ,  $\text{H}_2$ ,  $\text{NH}_3$  and water vapor at  $800^\circ\text{C}$
  - (3)  $\text{CH}_3$ ,  $\text{H}_2$ ,  $\text{NH}_4$  and water vapor at  $800^\circ\text{C}$
  - (4)  $\text{CH}_4$ ,  $\text{H}_2$ ,  $\text{NH}_3$  and water vapor at  $600^\circ\text{C}$
107. Select the correct match.
- |                         |   |  |
|-------------------------|---|--|
| (1) Thalassaemia        | - | X linked                                 |
| (2) Haemophilia         | - | Y linked                                 |
| (3) Phenylketonuria     | - | Autosomal dominant trait                 |
| (4) Sickle cell anaemia | - | Autosomal recessive trait, chromosome-11 |
108. Embryological support for evolution was disapproved by :
- (1) Oparin
  - (2) Karl Ernst von Baer
  - (3) Alfred Wallace
  - (4) Charles Darwin
109. Presence of which of the following conditions in urine are indicative of Diabetes Mellitus?
- (1) Renal calculi and Hyperglycaemia
  - (2) Uremia and Ketonuria
  - (3) Uremia and Renal Calculi
  - (4) Ketonuria and Glycosuria
110. The enzyme enterokinase helps in conversion of :
- (1) pepsinogen into pepsin
  - (2) protein into polypeptides
  - (3) trypsinogen into trypsin
  - (4) caseinogen into casein

111. Strobili or cones are found in :

- (1) *Equisetum*
- (2) *Salvinia*
- (3) *Pteris*
- (4) *Marchantia*

112. Meiotic division of the secondary oocyte is completed :

- (1) At the time of fusion of a sperm with an ovum
- (2) Prior to ovulation
- (3) At the time of copulation
- (4) After zygote formation

113. The body of the ovule is fused within the funiculus at :

- (1) Chalaza
- (2) Hilum
- (3) Micropyle
- (4) Nucellus

114. Goblet cells of alimentary canal are modified from :

- (1) Compound epithelial cells
- (2) Squamous epithelial cells
- (3) Columnar epithelial cells
- (4) Chondrocytes

115. Which of the following statements about inclusion bodies is **incorrect**?

- (1) These represent reserve material in cytoplasm.
- (2) They are not bound by any membrane.
- (3) These are involved in ingestion of food particles.
- (4) They lie free in the cytoplasm.

116. Name the plant growth regulator which upon spraying on sugarcane crop, increases the length of stem, thus increasing the yield of sugarcane crop.

- (1) Abscisic acid
- (2) Cytokinin
- (3) Gibberellin
- (4) Ethylene

117. Identify the correct statement with reference to human digestive system.

- (1) Vermiform appendix arises from duodenum.  
 (2) Ileum opens into small intestine.  
 (3) Serosa is the innermost layer of the alimentary canal.  
 (4) Ileum is a highly coiled part.

118. The ovary is half inferior in :

- (1) Plum  
 (2) Brinjal  
 (3) Mustard  
 (4) Sunflower

119. The infectious stage of *Plasmodium* that enters the human body is :

- (1) Male gametocytes  
 (2) Trophozoites  
 (3) Sporozoites  
 (4) Female gametocytes

120. Identify the wrong statement with reference to immunity.

- (1) Foetus receives some antibodies from mother, it is an example for passive immunity.  
 (2) When exposed to antigen (living or dead) antibodies are produced in the host's body. It is called "Active immunity".  
 (3) When ready-made antibodies are directly given, it is called "Passive immunity".  
 (4) Active immunity is quick and gives full response.

121. Match the trophic levels with their correct species examples in grassland ecosystem.

- |                          |              |
|--------------------------|--------------|
| (a) Fourth trophic level | (i) Crow     |
| (b) Second trophic level | (ii) Vulture |
| (c) First trophic level  | (iii) Rabbit |
| (d) Third trophic level  | (iv) Grass   |

Select the correct option :

- |     | (a)   | (b)   | (c)   | (d)  |
|-----|-------|-------|-------|------|
| (1) | (i)   | (ii)  | (iii) | (iv) |
| (2) | (ii)  | (iii) | (iv)  | (i)  |
| (3) | (iii) | (i)   | (i)   | (iv) |
| (4) | (iv)  | (iii) | (ii)  | (i)  |

122. Which is the important site of formation of glycoproteins and glycolipids in eukaryotic cells ?

- (1) Polysomes  
 (2) Endoplasmic reticulum  
 (3) Peroxisomes  
 (4) Golgi bodies

123. Identify the correct statement with regard to  $G_1$  phase (Gap 1) of interphase.

- (1) Nuclear Division takes place.  
 (2) DNA synthesis or replication takes place.  
 (3) Reorganisation of all cell components takes place.  
 (4) Cell is metabolically active, grows but does not replicate its DNA.

124. The first phase of translation is :

- (1) Recognition of an anti-codon  
 (2) Binding of mRNA to ribosome  
 (3) Recognition of DNA molecule  
 (4) Aminoacylation of tRNA

125. Name the enzyme that facilitates opening of DNA helix during transcription.

- (1) RNA polymerase  
 (2) DNA ligase  
 (3) DNA helicase  
 (4) DNA polymerase

126. The roots that originate from the base of the stem are :

- (1) Lateral roots  
 (2) Fibrous roots  
 (3) Primary roots  
 (4) Prop roots

127. Identify the wrong statement with reference to transport of oxygen.

- (1) Low  $pCO_2$  in alveoli favours the formation of oxyhaemoglobin.  
 (2) Binding of oxygen with haemoglobin is mainly related to partial pressure of  $O_2$ .  
 (3) Partial pressure of  $CO_2$  can interfere with  $O_2$  binding with haemoglobin.  
 (4) Higher  $H^+$  conc. in alveoli favours the formation of oxyhaemoglobin.



128. Select the correct statement.

- (1) Insulin is associated with hyperglycemia.  
 (2) Glucocorticoids stimulate gluconeogenesis.  
 (3) Glucagon is associated with hypoglycemia.  
 (4) Insulin acts on pancreatic cells and adipocytes.

129. Bilaterally symmetrical and acoelomate animals are exemplified by:

- (1) Annelida  
 (2) Ctenophora  
 (3) Platyhelminthes  
 (4) Aschelminthes

130. The oxygenation activity of RuBisCo enzyme in photorespiration leads to the formation of:

- (1) 1 molecule of 4-C compound and 1 molecule of 2-C compound  
 (2) 2 molecules of 3-C compound  
 (3) 1 molecule of 3-C compound  
 (4) 1 molecule of 6-C compound

131. Which one of the following is the most abundant protein in the animals?

- (1) Insulin  
 (2) Haemoglobin  
 (3) Collagen  
 (4) Lectin

132. Which of the following pairs is of unicellular algae?

- (1) *Chlorella* and *Spirulina*  
 (2) *Laminaria* and *Sargassum*  
 (3) *Gelidium* and *Gracilaria*  
 (4) *Anabaena* and *Volvox*

133. In water hyacinth and water lily, pollination takes place by:

- (1) insects and water  
 (2) insects or wind  
 (3) water currents only  
 (4) wind and water

134. Which of the following statements is correct?

- (1) Adenine does not pair with thymine.  
 (2) Adenine pairs with thymine through two H-bonds.  
 (3) Adenine pairs with thymine through one H-bond.  
 (4) Adenine pairs with thymine through three H-bonds.

135. Match the following columns and select the correct option.

Column - I		Column - II	
(a) Eosinophils	(i)	Immune response	
(b) Basophils	(ii)	Phagocytosis	
(c) Neutrophils	(iii)	Release histaminase, destructive enzymes	
(d) Lymphocytes	(iv)	Release granules containing histamine	

	(a)	(b)	(c)	(d)
(1)	(ii)	(i)	(iii)	(iv)
(2)	(iii)	(iv)	(ii)	(i)
(3)	(iv)	(i)	(ii)	(iii)
(4)	(i)	(ii)	(iv)	(iii)

136. In a guitar, two strings A and B made of same material are slightly out of tune and produce beats of frequency 6 Hz. When tension in B is slightly decreased, the beat frequency increases to 7 Hz. If the frequency of A is 530 Hz, the original frequency of B will be:

- (1) 537 Hz  
 (2) 523 Hz  
 (3) 524 Hz  
 (4) 536 Hz

137. The capacitance of a parallel plate capacitor with air as medium is  $6 \mu\text{F}$ . With the introduction of dielectric medium, the capacitance becomes  $30 \mu\text{F}$ . The permittivity of the medium is:

- ( $\epsilon_0 = 8.85 \times 10^{-12} \text{ C}^2 \text{ N}^{-1} \text{ m}^{-2}$ )  
 (1)  $5.00 \text{ C}^2 \text{ N}^{-1} \text{ m}^{-2}$   
 (2)  $0.44 \times 10^{-13} \text{ C}^2 \text{ N}^{-1} \text{ m}^{-2}$   
 (3)  $1.77 \times 10^{-12} \text{ C}^2 \text{ N}^{-1} \text{ m}^{-2}$   
 (4)  $0.44 \times 10^{-10} \text{ C}^2 \text{ N}^{-1} \text{ m}^{-2}$

138. The phase difference between displacement and acceleration of a particle in a simple harmonic motion is :

- (1) zero  
 (2)  $\pi$  rad  
 (3)  $\frac{3\pi}{2}$  rad  
 (4)  $\frac{\pi}{2}$  rad

139. Light of frequency 1.5 times the threshold frequency is incident on a photosensitive material. What will be the photoelectric current if the frequency is halved and intensity is doubled ?

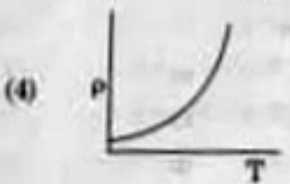
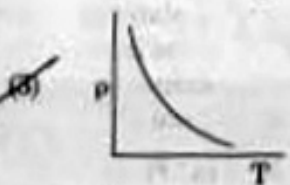
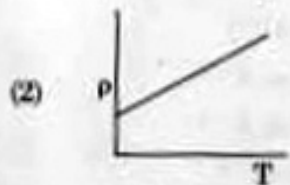
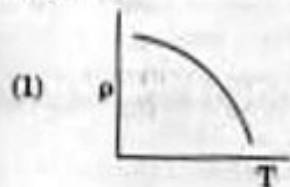
- (1) zero  
 (2) doubled  
 (3) four times  
 (4) one-fourth

140. A spherical conductor of radius 10 cm has a charge of  $3.2 \times 10^{-7}$  C distributed uniformly. What is the magnitude of electric field at a point 15 cm from the centre of the sphere ?

$$\left( \frac{1}{4\pi\epsilon_0} = 9 \times 10^9 \text{ N m}^2/\text{C}^2 \right)$$

- (1)  $1.28 \times 10^7$  N/C  
 (2)  $1.28 \times 10^4$  N/C  
 (3)  $1.28 \times 10^5$  N/C  
 (4)  $1.28 \times 10^6$  N/C

141. Which of the following graph represents the variation of resistivity ( $\rho$ ) with temperature (T) for copper ?



142. For transistor action, which of the following statements is correct ?

- (1) The base region must be very thin and lightly doped.  
 (2) Base, emitter and collector regions should have same doping concentrations.  
 (3) Base, emitter and collector regions should have same size.  
 (4) Both emitter junction as well as the collector junction are forward biased.

143. The average thermal energy for a mono-atomic gas is : ( $k_B$  is Boltzmann constant and T, absolute temperature)

- (1)  $\frac{7}{2} k_B T$   
 (2)  $\frac{1}{2} k_B T$   
 (3)  $\frac{3}{2} k_B T$   
 (4)  $\frac{5}{2} k_B T$

144. In a certain region of space with volume  $0.2 \text{ m}^3$ , the electric potential is found to be 5 V throughout. The magnitude of electric field in this region is :

- (1) 5 N/C  
 (2) zero  
 (3) 0.5 N/C  
 (4) 1 N/C

145. A capillary tube of radius  $r$  is immersed in water and water rises in it to a height  $h$ . The mass of the water in the capillary is 5 g. Another capillary tube of radius  $2r$  is immersed in water. The mass of water that will rise in this tube is :

- (1) 20.0 g  
 (2) 2.5 g  
 (3) 5.0 g  
 (4) 10.0 g

146. Two particles of mass 5 kg and 10 kg respectively are attached to the two ends of a rigid rod of length 1 m with negligible mass.

The centre of mass of the system from the 5 kg particle is nearly at a distance of :

- (1) 80 cm  
 (2) 33 cm  
 (3) 50 cm  
 (4) 67 cm



147. Two cylinders A and B of equal capacity are connected to each other via a stop cock. A contains an ideal gas at standard temperature and pressure. B is completely evacuated. The entire system is thermally insulated. The stop cock is suddenly opened. The process is :

- (1) isobaric
- (2) isothermal
- (3) adiabatic
- (4) isochoric

148. The energy required to break one bond in DNA is  $10^{-20}$  J. This value in eV is nearly :

- (1) 0.006
- (2) 6
- (3) 0.6
- (4) 0.06

149. A ball is thrown vertically downward with a velocity of 20 m/s from the top of a tower. It hits the ground after some time with a velocity of 80 m/s. The height of the tower is : ( $g = 10 \text{ m/s}^2$ )

- (1) 300 m
- (2) 360 m
- (3) 340 m
- (4) 320 m

150. The energy equivalent of 0.5 g of a substance is :

- (1)  $0.5 \times 10^{13}$  J
- (2)  $4.5 \times 10^{16}$  J
- (3)  $4.5 \times 10^{13}$  J
- (4)  $1.5 \times 10^{13}$  J

151. The solids which have the negative temperature coefficient of resistance are :

- (1) insulators and semiconductors
- (2) metals
- (3) insulators only
- (4) semiconductors only

152. An electron is accelerated from rest through a potential difference of V volt. If the de Broglie wavelength of the electron is  $1.227 \times 10^{-2}$  nm, the potential difference is :

- (1)  $10^4$  V
- (2) 10 V
- (3)  $10^2$  V
- (4)  $10^3$  V

153. A long solenoid of 50 cm length having 100 turns carries a current of 2.5 A. The magnetic field at the centre of the solenoid is :

$$(\mu_0 = 4\pi \times 10^{-7} \text{ T m A}^{-1})$$

- (1)  $3.14 \times 10^{-5}$  T
- (2)  $6.28 \times 10^{-4}$  T
- (3)  $3.14 \times 10^{-4}$  T
- (4)  $6.28 \times 10^{-5}$  T

154. The ratio of contributions made by the electric field and magnetic field components to the intensity of an electromagnetic wave is : ( $c = \text{speed of electromagnetic waves}$ )

- (1) 1 :  $c^2$
- (2)  $c$  : 1
- (3) 1 : 1
- (4) 1 :  $c$

155. A short electric dipole has a dipole moment of  $16 \times 10^{-9}$  C m. The electric potential due to the dipole at a point at a distance of 0.6 m from the centre of the dipole, situated on a line making an angle of  $60^\circ$  with the dipole axis is :

$$\left( \frac{1}{4\pi\epsilon_0} = 9 \times 10^9 \text{ N m}^2/\text{C}^2 \right)$$

- (1) zero
- (2) 50 V
- (3) 200 V
- (4) 400 V

156. An iron rod of susceptibility 599 is subjected to a magnetising field of  $1200 \text{ A m}^{-1}$ . The permeability of the material of the rod is :

$$(\mu_0 = 4\pi \times 10^{-7} \text{ T m A}^{-1})$$

- (1)  $2.4\pi \times 10^{-7} \text{ T m A}^{-1}$
- (2)  $2.4\pi \times 10^{-4} \text{ T m A}^{-1}$
- (3)  $8.0 \times 10^{-5} \text{ T m A}^{-1}$
- (4)  $2.4\pi \times 10^{-5} \text{ T m A}^{-1}$

157. A body weighs 72 N on the surface of the earth. What is the gravitational force on it, at a height equal to half the radius of the earth ?

- (1) 24 N
- (2) 48 N
- (3) 32 N
- (4) 30 N



158. A screw gauge has least count of 0.01 mm and there are 50 divisions in its circular scale.

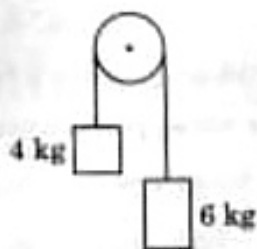
The pitch of the screw gauge is :

- (1) 1.0 mm
- (2) 0.01 mm
- (3) 0.25 mm
- (4) 0.5 mm

159. The quantities of heat required to raise the temperature of two solid copper spheres of radii  $r_1$  and  $r_2$  ( $r_1 = 1.5 r_2$ ) through 1 K are in the ratio :

- (1)  $\frac{5}{3}$
- (2)  $\frac{27}{8}$
- (3)  $\frac{9}{4}$
- (4)  $\frac{3}{2}$

160. Two bodies of mass 4 kg and 6 kg are tied to the ends of a massless string. The string passes over a pulley which is frictionless (see figure). The acceleration of the system in terms of acceleration due to gravity ( $g$ ) is :



- (1)  $g/10$
- (2)  $g$
- (3)  $g/2$
- (4)  $g/5$

161. Assume that light of wavelength 600 nm is coming from a star. The limit of resolution of telescope whose objective has a diameter of 2 m is :

- (1)  $6.00 \times 10^{-7}$  rad
- (2)  $3.66 \times 10^{-7}$  rad
- (3)  $1.83 \times 10^{-7}$  rad
- (4)  $7.32 \times 10^{-7}$  rad

162. The increase in the width of the depletion region in a p-n junction diode is due to :

- (1) increase in forward current
- (2) forward bias only
- (3) reverse bias only
- (4) both forward bias and reverse bias

163. Light with an average flux of  $20 \text{ W/cm}^2$  falls on a non-reflecting surface at normal incidence having surface area  $20 \text{ cm}^2$ . The energy received by the surface during time span of 1 minute is :

- (1)  $48 \times 10^3 \text{ J}$
- (2)  $10 \times 10^3 \text{ J}$
- (3)  $12 \times 10^3 \text{ J}$
- (4)  $24 \times 10^3 \text{ J}$

164. The mean free path for a gas, with molecular diameter  $d$  and number density  $n$  can be expressed as :

- (1)  $\frac{1}{\sqrt{2} n^2 \pi^2 d^2}$
- (2)  $\frac{1}{\sqrt{2} n \pi d}$
- (3)  $\frac{1}{\sqrt{2} n \pi d^2}$
- (4)  $\frac{1}{\sqrt{2} n^2 \pi d^2}$

165. A  $40 \mu\text{F}$  capacitor is connected to a 200 V, 50 Hz ac supply. The rms value of the current in the circuit is, nearly :

- (1) 25.1 A
- (2) 1.7 A
- (3) 2.05 A
- (4) 2.5 A

166. The color code of a resistance is given below :



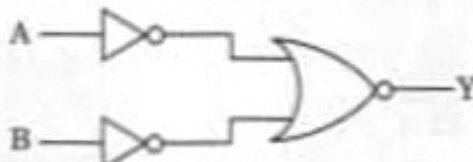
The values of resistance and tolerance, respectively, are :

- (1) 470  $\Omega$ , 5%
- (2) 470 k $\Omega$ , 5%
- (3) 47 k $\Omega$ , 10%
- (4) 4.7 k $\Omega$ , 5%

167. A wire of length  $L$ , area of cross section  $A$  is hanging from a fixed support. The length of the wire changes to  $L_1$  when mass  $M$  is suspended from its free end. The expression for Young's modulus is :

- (1)  $\frac{MgL}{A(L_1 - L)}$
- (2)  $\frac{MgL_1}{AL}$
- (3)  $\frac{Mg(L_1 - L)}{AL}$
- (4)  $\frac{MgL}{AL_1}$

168. For the logic circuit shown, the truth table is :



- (1)
 

A	B	Y
0	0	1
0	1	0
1	0	0
1	1	0
- (2)
 

A	B	Y
0	0	0
0	1	0
1	0	0
1	1	1
- (3)
 

A	B	Y
0	0	0
0	1	1
1	0	1
1	1	1
- (4)
 

A	B	Y
0	0	1
0	1	1
1	0	1
1	1	0

169. A series LCR circuit is connected to an ac voltage source. When  $L$  is removed from the circuit, the phase difference between current and voltage is  $\frac{\pi}{3}$ . If instead  $C$  is removed from the circuit, the phase difference is again  $\frac{\pi}{3}$  between current and voltage. The power factor of the circuit is

- (1) -1.0
- (2) zero
- (3) 0.5
- (4) 1.0

170. Dimensions of stress are :

- (1)  $[ML^{-1}T^{-2}]$
- (2)  $[MLT^{-2}]$
- (3)  $[ML^2T^{-2}]$
- (4)  $[ML^0T^{-2}]$

171. A cylinder contains hydrogen gas at pressure of 249 kPa and temperature 27°C.

Its density is : ( $R = 8.3 \text{ J mol}^{-1} \text{ K}^{-1}$ )

- (1) 0.02 kg/m<sup>3</sup>
- (2) 0.5 kg/m<sup>3</sup>
- (3) 0.2 kg/m<sup>3</sup>
- (4) 0.1 kg/m<sup>3</sup>

172. Find the torque about the origin when a force of  $3\hat{j}$  N acts on a particle whose position vector is  $2\hat{k}$  m.

- (1)  $6\hat{k}$  N m
- (2)  $6\hat{i}$  N m
- (3)  $6\hat{j}$  N m
- (4)  $-6\hat{i}$  N m

173. For which one of the following, Bohr model is valid ?

- (1) Singly ionised neon atom ( $\text{Ne}^+$ )
- (2) Hydrogen atom
- (3) Singly ionised helium atom ( $\text{He}^+$ )
- (4) Deuteron atom

174. When a uranium isotope  ${}_{92}^{235}\text{U}$  is bombarded with a neutron, it generates  ${}_{36}^{91}\text{Kr}$  three neutrons and:

- (1)  ${}_{36}^{103}\text{Kr}$   
 (2)  ${}_{36}^{144}\text{Ba}$   
 (3)  ${}_{40}^{91}\text{Zr}$   
 (4)  ${}_{36}^{101}\text{Kr}$

175. Taking into account of the significant figures, what is the value of  $9.99 \text{ m} - 0.0099 \text{ m}$ ?

- (1) 9.9 m  
 (2) 9.9801 m  
 (3) 9.98 m  
 (4) 9.980 m

176. The Brewster's angle  $i_b$  for an interface should be:

- (1)  $i_b = 90^\circ$   
 (2)  $0^\circ < i_b < 30^\circ$   
 (3)  $30^\circ < i_b < 45^\circ$   
 (4)  $45^\circ < i_b < 90^\circ$

177. A charged particle having drift velocity of  $7.5 \times 10^{-4} \text{ m s}^{-1}$  in an electric field of  $3 \times 10^{10} \text{ Vm}^{-1}$ , has a mobility in  $\text{m}^2 \text{V}^{-1} \text{s}^{-1}$  of:

- (1)  $2.25 \times 10^{-15}$   
 (2)  $2.25 \times 10^{15}$   
 (3)  $2.5 \times 10^6$   
 (4)  $2.5 \times 10^{-6}$

178. In Young's double slit experiment, if the separation between coherent sources is halved and the distance of the screen from the coherent sources is doubled, then the fringe width becomes:

- (1) one-fourth  
 (2) double  
 (3) half  
 (4) four times

179. A resistance wire connected in the left gap of a metre bridge balances a  $10 \Omega$  resistance in the right gap at a point which divides the bridge wire in the ratio 3 : 2. If the length of the resistance wire is 1.5 m, then the length of  $1 \Omega$  of the resistance wire is:

- (1)  $1.5 \times 10^{-2} \text{ m}$   
 (2)  $1.0 \times 10^{-2} \text{ m}$   
 (3)  $1.0 \times 10^{-1} \text{ m}$   
 (4)  $1.5 \times 10^{-1} \text{ m}$

180. A ray is incident at an angle of incidence  $i$  on one surface of a small angle prism (with angle of prism  $A$ ) and emerges normally from the opposite surface. If the refractive index of the material of the prism is  $\mu$ , then the angle of incidence is nearly equal to:

- (1)  $\frac{\mu A}{2}$   
 (2)  $\frac{A}{2\mu}$   
 (3)  $\frac{2A}{\mu}$   
 (4)  $\mu A$

• • • • •