

**ALL INDIA SAINIK SCHOOLS ENTRANCE EXAMINATION: 2019**  
**PAPER I – MATHS, ENGLISH, GENERAL SCIENCE AND SOCIAL STUDIES**

**CLASS – IX**

0023676

Time : 2½ Hrs

Max. Marks : 350

Name in Full ..... Roll No. ....

---

**INSTRUCTIONS**

1. This question paper contains FOUR sections and you have to answer all questions in the OMR answer sheet. Section "A" Mathematics contains 50 questions of 4 marks each, Section "B" English, Section "C" Gen Science and Section "D" Social Studies contains 25 questions of 2 marks each respectively.
2. Paper II (Intelligence paper) contains 25 questions. The Question Paper will be given after 2 ½ hours. Answers for Paper II are also to be written in the same OMR answer sheet.
3. There is only one correct answer for each question. Darken only one bubble for each question. If you darken more than one bubble, your answer will be treated as wrong.
4. Evaluation of OMR answer sheet will be done on a computer. Be careful and ensure no unnecessary marks on the OMR answer sheet/ fold or attempt to deface the OMR answer sheet, otherwise it will not be evaluated.
5. Rough work must be done on the additional sheet only and **NOT** on OMR answer sheet.
6. Write your answer in Blue/Black ink only. Do not use pencil.
7. There are total 16 pages in the question paper including two pages for rough work.

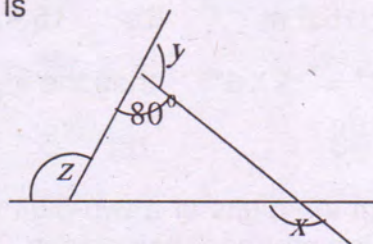


**SECTION A**  
**MATHEMATICS**

1. With the help of ruler and compass it is not possible to construct an angle of:-  
(a)  $22.5^\circ$     (b)  $37.5^\circ$     (c)  $67.5^\circ$     (d)  $40^\circ$
2. What time period is taken when interest is calculated half yearly?  
(a) twice as much as the number of given years  
(b) half as much as the number of given years  
(c) same as the number of given years  
(d) none of these
3. If a number is doubled then which of the following is a correct statement?  
(a) Its cube is two times the cube of the given number.  
(b) Its cube is three times the cube of the given number.  
(c) Its cube is six times the cube of the given number.  
(d) Its cube is eight times the cube of the given number.
4. Which of the following is the cube root of  $-64/243$ ?  
(a)  $7/4$                       (b)  $-7/4$                       (c)  $4/7$                       (d)  $-4/7$
5.  $[(1/2)^{-1} + (2/3)^2 - (3/4)^0]^{-2}$  is equal to:  
(a)  $81/484$                       (b)  $81/169$                       (c)  $169/81$                       (d)  $16/81$
6. Which of the following is equal to  $x^3 - 225x$   
(a)  $x(1 - 15x)(1 + 15x)$                       (b)  $x(x - 15)(x + 15)$   
(c)  $x(1 - 15x)(1 - 15x)$                       (d)  $x(1 + 15x)(1 - 15x)$
7. The points  $(-3, 2)$  and  $(2, -3)$  represent:  
(a) different points    (b) same point    (c) the origin    (d) none of these.
8. If the dimensions of a room are  $l$ ,  $b$  and  $h$ , ( $\because l \rightarrow$  length,  $b \rightarrow$  breadth and  $h \rightarrow$  height) them which of the following is the area of its four walls?  
(a)  $2h(l + b)$                       (b)  $2h(l + h)$                       (c)  $2l(h + h)$                       (d)  $2h + l + b$
9. If  $[1X 2Y 6Z]$  is a number divisible by 9, then the least value of  $X + Y + Z$  is:  
(a) 0                      (b) 1                      (c) 6                      (d) 9
10. Which of the following is the Multiplicative identity for rational numbers?  
(a) 1                      (b) -1                      (c) 0                      (d) None of these



11. The mid value of a class interval is 42. If the class size is 10, then the upper and lower limits of the class are:-  
 (a) 37.5 and 47.5 (b) 47 and 37 (c) 37 & 47 (d) 47.5 and 37.5
12. The speed of a car is  $54\frac{1}{2}$  Km/hr . The distance travelled by it in  $7\frac{1}{2}$  hours  $35\frac{1}{2}$  minutes is –  
 (a)  $999\frac{1}{48}$  Km (b)  $9929\frac{1}{48}$  Km (c)  $9919\frac{1}{48}$  Km (d)  $9919\frac{1}{28}$  Km
13. The ages of A and B are in the ratio of 5:7. Four years from now the ratio of their ages will be 3:4. The present age of B is .  
 (a) 20 Years (b) 28 Years (c) 15 Years (d) 21 Years
14. 36 is divided into parts such that 5 times the first part added to 3 times the second part makes 142. The two parts are :-  
 (a) 10 and 26 (b) 12 and 24 (c) 15 and 21 (d) 17 and 19
15. Divide Rs 1500 into two parts so that 10% of the larger part exceeds 8% of smaller part by Rs 60. The value of larger and smaller parts are  
 (a) Rs 1200 and Rs 300 (b) Rs 850 and Rs 650  
 (c) Rs 900 and Rs 600 (d) Rs 1000 and Rs 500
16. The value of  $x + y + z$  in the adjoining figure is  
 (a)  $180^\circ$   
 (b)  $270^\circ$   
 (c)  $360^\circ$   
 (d)  $720^\circ$



17. If an exterior angle of a regular polygon is of measure  $12^\circ$ , then the number of its sides is?  
 (a) 12 (b) 18 (c) 22 (d) 30
18. The smallest whole number by which 44 should be multiplied so as to make it a perfect square is  
 (a) 4 (b) 11 (c) 6 (d) 5
19. There are 12321 workers in a factory. They stand in such a way that the number of workers in each row is equal to the number of rows. How many workers stand in each row?  
 (a) 111 (b) 121 (c) 131 (d) 141
20. Cubical boxes of volume  $15625 \text{ cm}^3$  each are put in a cubical store of side 2.5m. How many such boxes can be put in the store?  
 (a) 100 (b) 250 (c) 500 (d) 1000



21. If  $a^2 + \frac{1}{a^2} = 27$ , then the value of  $a - \frac{1}{a}$  is  
 (a)  $\pm 4$  (b)  $\pm 3$  (c)  $\pm 6$  (d)  $\pm 5$
22. If the sum of the lengths of bases of a trapezium is 12 cm and area is  $14.1 \text{ cm}^2$ , then its altitude will be  
 (a) 2.35 cm (b) 4.70 cm (c) 9.40 cm (d) 1 cm
23. If the length, width and height of a cuboid are 4.2 m, 3 m and 1.1 m, then its capacity in litres will be  
 (a) 12860 litres (b) 13860 litres (c) 14860 litres (d) 15860 litres
24. A road roller is 350 cm long and its diameter is 84 cm. It takes 500 complete revolutions to travel the road. The area covered by it in  $\text{m}^2$  will be  
 (a) 4620 (b) 6420 (c) 2460 (d) 4260
25. A solid cuboidal piece of wood measures 3 m x 2.5 m x 8 cm. Find the weight of the piece if 1 cubic cm of wood weighs 9 grams.  
 (a) 4500 kg (b) 5000 kg (c) 5400 kg (d) 5600 kg
26. A well was dug with 14 m inner diameter and was 8 m deep. The earth dug out of it was evenly spread out on a rectangular plot of size 10 m B 8 m. Find the raise in the height of the plot.  
 (a) 15.6 m (b) 15.4 m (c) 15 m (d) 15.5 m
27. If  $5^{3x+4} = 25 \times 5^{4x-1}$  then the value of  $x$  is :  
 (a) -3 (b) -5 (c) 5 (d) 3
28. Sum of the digits of a two-digit number is 9. If 9 is subtracted from the number, the digits interchange their places. The original number is  
 (a) 81 (b) 54 (c) 72 (d) 45
29. You are given the multiplication of two numbers as below:

$$\begin{array}{r}
 5 \text{ A } 3 \\
 \times \text{ B } 2 \\
 \hline
 1 \text{ C } 4 \text{ 6} \\
 + 2 \text{ D } 9 \text{ 2} \\
 \hline
 \text{E } 1 \text{ F } \text{ G } 6
 \end{array}$$

The values of the letters A, B, C, D, E, F and G are

- (a)  $A = 2, B = 4, C = 0, D = 0, E = 2, F = 9, G = 6$   
 (b)  $A = 7, B = 4, C = 1, D = 0, E = 2, F = 0, G = 6$   
 (c)  $A = 2, B = 4, C = 1, D = 0, E = 2, F = 0, G = 6$   
 (d)  $A = 7, B = 4, C = 0, D = 9, E = 2, F = 9, G = 6$



30. From a pack of 52 playing cards, one card is drawn at random. The probability of the drawn card being a black ten or a king is  
 (a)  $\frac{5}{26}$  (b)  $\frac{3}{26}$  (c)  $\frac{3}{13}$  (d)  $\frac{2}{13}$
31. A spider is climbing a wall. It climbs up 5 cm, falls back 3 cm, climbs up another 4 cm, falls back 6 cm and climbs up another 5 cm. How far the spider has climbed from its starting point?  
 (a) 5 cm (b) 6 cm (c) 4 cm (d) 23 cm
32. What will be the amount and compound interest on Rs.5000 in 3 years if the rate of interest is 4% for the first year, 3% for the second year and 2% for the third year.  
 (a) Rs.5436.12 and Rs.436.12 (b) Rs.5563.12 and Rs.563.12  
 (c) Rs.5063.12 and Rs.63.12 (d) Rs.5463.12 and Rs.463.12
33. The smallest square number which is divisible by each one of the numbers 8, 9, 10 is  
 (a) 2600 (b) 3600 (c) 2900 (d) 3900
34. If 25% of a number is less than 18% of 650 by 19, then find the number  
 (a) 293 (b) 329 (c) 239 (d) 392
35. If the Cost price is 25% of selling price then the profit percentage is  
 (a) 300% (b) 305% (c) 350% (d) 355%
36. Area of a rectangle whose length is  $4ab$  and breadth is  $6b^2$  is  
 (a)  $24ab$  (b)  $24ab^2$  (c)  $24ab^3$  (d)  $24ab^4$
37. The total surface area of a cone having its slant height 9 dm and diameter of its base as 24 dm is  
 (a) 792 sq dm (b) 729 sq dm (c) 279 sq dm (d) 297 sq dm
38. A Cube of side 4 cm contains a sphere touching its side. Then the Volume of the gap in between is  
 (a) 30 cu.cm (b) 30.48 cu.cm (c) 30.84 cu.cm (d) 31 cu.cm
39. A chord of a Circle is of length 6 cm and it is at a distance of 4 cm from the centre. Find the radius of the circle  
 (a) 3 cm (b) 4 cm (c) 5 cm (d) 6 cm
40. The mean of 40 observations was 160. It was detected on rechecking that the value of 165 was wrongly copied as 125 for computation of mean. Find the correct mean  
 (a) 161 (b) 159 (c) 166 (d) 111
41. If  $x+y=12$  and  $xy=27$  then the value of  $x^3+y^3$   
 (a) 756 (b) 765 (c) 567 (d) 576



42. In what time will a sum of money double itself at  $6\frac{1}{4}\%$  p.a on simple interest  
 (a) 13 years                      (b) 14 years                      (c) 15 years                      (d) 16 years
43. In a triangle ABC, E is the midpoint of median AD. Then the area of  $\Delta$  BED is  
 (a) Area of  $\Delta$ ABC              (b) 0                      (c)  $\frac{1}{2}$  (area of  $\Delta$ ABC)              (d)  $\frac{1}{4}$ (area of  $\Delta$ ABC)
44. The radius of a spherical balloon increases from 7 cm to 14 cm as air is being pumped into it. Find the ratio of surface areas of the balloon in the two cases  
 (a) 1:4                                      (b) 1:2                                      (c) 4:1                                      (d) 2:1
45. Two isosceles triangles have equal vertical angles and their areas in the ratio 25: 36. Find the ratio of their corresponding heights  
 (a) 4:5                                      (b) 5:6                                      (c) 6:7                                      (d) 5:7
46. The face value of each share is Rs 10. If dividend is 16% then what will be the income from 600 shares?  
 (a) Rs 900                                      (b) Rs 960                                      (c) Rs 860                                      (d) Rs 800
47. A solid gold ball of radius 7 cm was melted and then drawn into a wire of diameter 0.2 cm. Find the length of the wire.  
 (a) 457.33 m                      (b) 475.33 m                      (c) 547.33 m                      (d) 745.33 m
48. A horse is tethered for grazing inside a rectangular field 70 m by 52 m and is tethered to one corner by a rope 21 m long. How much area can it graze?  
 (a) 346.5 sq m                      (b) 340 sq m                      (c) 349.5 sq m                      (d) 348.5 sq m
49. A race boat covers a distance of 66 km downstream in 110 minutes. It covers the same distance upstream in 120 minutes. The speed of the boat in still water is 34.5 km/hr. The speed of the stream will be  
 (a) 1.5 km/hr                      (b) 2 km/hr                      (c) 2.5 km/hr                      (d) 3 km/hr
50. The value of  $10001^2$   
 (a) 1002001                      (b) 100201                      (c) 100020001                      (d) 1000201



**SECTION B**  
**ENGLISH**

51. The correctly punctuated sentence is :-
- (a) Mina said, wheres' Kishore?  
(b) Mina said where's kishore !  
(c) Mina said, 'Where's Kishore ?'  
(d) Mina said, 'Wheres' kishore !'
52. '**TO LET THE CAT OUT OF THE BAG**' means :-
- (a) To jump out of a problem (b) Have a pet animal  
(c) To feel extremely happy (d) Reveal something that was kept a secret before
53. Choose the correct order to make the sentence below meaningful :-
- Month / while/ Mumbai/ Last/ it/ in/ happened/ living / I was  
1            2            3            4        5        6            7            8            9
- (a) 1 8 9 2 7 5 6 3 4            (b) 1 2 3 4 5 6 7 8 9  
(c) 5 7 8 9 2 4 3 6 1            (d) 5 7 2 9 8 6 3 4 1
54. The adjective form of '**ADVANTAGE**' is :
- (a) advantageous (b) advantagly (c) advantage (d) advantagement
55. The active voice of – "**He had not been invited by us**" is :-
- (a) We had been invited by us.  
(b) We had invited by him.  
(c) We had not invited him.  
(d) We had not invited by us.
- (a) few            (b) those            (c) any            (d) this
56. Identify the tense in the sentence given below :-
- When I arrived Ram had just left.**
- (a) Present Perfect (b) Present Continuous (c) Past Perfect (d) Past Continuous
57. The synonym of the word '**SPLENDID**' is :-
- (a) Shortage            (b) Insignificant            (c) impressive            (d) excess



58. The word 'brittle' means  
(a) not easily breakable (b) easily breakable  
(c) easily understandable (d) easily portable

**Find out the part containing error in the given statement.**

59. He is one of the talented student in our class.  
(a) He is one of the (b) talented student  
(c) in our class (d) no error

60. The thief was taken to the nearby police station.  
(a) The thief was (b) taken to the  
(c) nearby police station (d) no error

**Fill in the blank by choosing the appropriate preposition from the given options.**

61. They have gone \_\_\_\_\_ an excursion.  
(a) to (b) for (c) with (d) on

62. The team rebelled \_\_\_\_\_ the captain.  
(a) upon (b) over (c) with (d) against

**Choose the correct option if the given statements are changed into comparative degree.**

63. Silver is one of the most useful metals.  
(a) Silver is useful to any other metal.  
(b) Silver is useful than any other metal.  
(c) Silver is more useful than all other metals.  
(d) Silver is more useful than most of the metals.
64. Learning Italian is not as difficult as learning Japanese.  
(a) Learning Japanese is more difficult to learning Italian.  
(b) Learning Italian is not difficult than learning Japanese.  
(c) Learning Japanese is more difficult than learning in Italian.  
(d) Learning Japanese is more difficult than learning Italian.

65. The adjective form of 'apathy' is  
(a) apathetically (b) apathical (c) apathetic (d) pathetic

66. The noun form of 'Proud' is  
(a) proudy (b) pride (c) proudly (d) proudliness



**Read the following passage and answer the questions that follow.**

Books are by far, the most lasting product of human effort. Temples crumble into ruins. Pictures and statues decay, but books survive. Time does not destroy the great thoughts which are as fresh today as when they first passed through the author's mind ages ago. The only effect of time has been to throw out the bad products, for nothing in literature can survive long unless it is really good and of lasting value. Books introduce us to the best society; they bring us into the presence of the greatest minds that have ever lived, we hear what they said and did; we see them as if they were really alive, we sympathize with them, enjoy with them and grieve with them.

67. According to the passage, books live forever because
- (a) They have productive value.
  - (b) Time does not destroy great thoughts.
  - (c) They are in printed form.
  - (d) They have the power to influence people.
68. According to the passage, temples, pictures and statues belong to the same category because
- (a) All of them are beautiful.
  - (b) All of them are substantial.
  - (c) All of them are likely to decay.
  - (d) All of them are fashioned by men.
69. Books introduce us into the best society as
- (a) They give us a glimpse of the greatest minds.
  - (b) They take us to the world of imagination.
  - (c) They instill in us the qualities of the greatest minds.
  - (d) They introduce us to elite class of the society.
70. Radha , " I won't buy a new car". (Choose the correct word to fill in the blank.)  
Radha said that she \_\_\_\_ buy a new car.
- (a) won't      (b) will      (c) wouldn't      (d) would
71. They will ask you a lot of questions at the interview. The sentence, when converted into the passive voice, would read as:
- (a) You are asked a lot of questions at the interview.
  - (b) You were being asked a lot of questions at the interview.
  - (c) You will be asked a lot of questions at the interview.
  - (d) You are being asked a lot of questions at the interview.
72. The phrase *in cold blood* means
- (a) Indifferently      (b) cruelly      (c) thoughtlessly      (d) deliberately



73. The workers went out of the factory \_\_\_\_\_ to hold a protest rally. (Choose the correct word to fill in the blank.)  
(a) en masse (b) en route (c) impasse (d) de facto

74. To put up with means

- (a) to close (b) to prolong (c) to tolerate (d) to forget

75. Fill in the blank with a possessive pronoun chosen from those given below.  
Mani declared that the book was not-----

- (a) our (b) her (c) your (d) hers

### SECTION C

#### GENERAL SCIENCE

76. Rhizobium bacteria:-

- (a) Help in digestion (b) Help in nitrogen fixation  
(c) Cause diseases (d) All of the above

77. The metal which is stored in kerosene:-

- (a) Phosphorus (b) Magnesium  
(c) Sodium (d) Calcium

78. Poor conductors are:-

- (a) Plastics (b) Clothes (c) Wood (d) All of these

79. There are following zones of a flame:-

- (a) Two (b) Three (c) Four (d) No any zone

80. Force of friction always acts on moving objects and its direction shall be

- (a) On any direction  
(b) Along the direction of motion  
(c) Perpendicular to the direction of motion  
(d) Opposite to the direction of motion

81. The stage of the embryo in which all the body parts can be identified is

- (a) Fetus (b) Zygote (c) Infant (d) None of these

82. Diabetes is due to the malfunctioning of

- (a) Adrenal gland (b) Pituitary gland (c) Heart (d) Pancreas

83. Naphthalene balls are obtained from

- (a) Carbon (b) Coke (c) Coal tar (d) Coal gas



84. John accidentally placed his hand over a flame and immediately pulled it back. He felt the sensation of heat and reacted due to the action of  
(a) Nerve cells (b) Blood cells (c) Skin surface (d) Nucleus of cells
85. A purple coloured nonmetal forms a brown solution in alcohol which is applied on wounds as an antiseptic. Name of the nonmetal is  
(a) Phosphorous (b) Carbon (c) Sulphur (d) Iodine
86. Given below are the harmful effects of weeds on crop plants. Choose the correct combination of statements.  
(i) They interfere in harvesting (ii) they help crop plants to grow healthy  
(iii) they compete with crop plants for water, nutrients, space and light  
(iv) they affect plant growth.  
(a) i, iii, iv (b) iii, iv (c) iii only (d) i, ii, iii, iv
87. Which of the following groups contain all synthetic substances?  
(a) Nylon, Terylene, Wool (b) PVC, Polythene, Bakelite  
(c) Cotton, Polycot, Rayon (d) Acrylic, Silk, Wool
88. Which of the following statement is true about endemic species?  
(a) They are found exclusively in a specific habitat  
(b) Endemic species can never become endangered  
(c) they are only found in zoos and botanical gardens  
(d) They are not affected by the destruction of their habitat
89. Identify the correct statement about cells.  
(a) All the cells have nucleus (b) Cells of an organ have similar structure  
(c) Cells of a tissue have similar structure (d) Shape of all types of cells is round
90. Aquatic animals in which fertilization occurs in water are said to be  
(a) Viviparous without fertilization  
(b) Oviparous with external fertilization  
(c) Viviparous with internal fertilization  
(d) Oviparous with internal fertilization
91. The light from sun takes 500 s to reach the earth. Assuming that the speed of light is  $3,00,000 \text{ kms}^{-1}$ , calculate the distance between the sun and the earth.  
(a) 100 million km (b) 150 million km (c) 1500 million km (d) 15 million km



92. Which of the following is not an application of chemical effect of electric current?
- (a) Electroplating of metals                      (b) Purification of metals  
(c) Decomposition of elements                      (d) Decomposition of compounds
93. An earthquake of magnitude '6' on Richter scale has
- (a) Ten times more destructive energy than an earthquake of magnitude '4'  
(b) Hundred times more destructive energy than an earthquake of magnitude '4'  
(c) Thousand times more destructive energy than an earthquake of magnitude '4'  
(d) One and half times more destructive energy than an earthquake of magnitude '4'
94. Which of the following statements is correct regarding rods and cones in the human eye?
- (a) Cones are sensitive to dim light                      (b) Cones are sensitive to bright light  
(c) Rods are sensitive to bright light                      (d) Rods can sense colour
95. Suppose a new planet is discovered between Uranus and Neptune, its time period of revolution around the sun would be
- (a) Less than that of Neptune                      (b) More than that of Neptune  
(c) Equal to that of Neptune or Uranus                      (d) Less than that of Uranus
96. Ramesh was cooking potato curry on a chulha. To his surprise he observed that the copper vessel was getting blackened from outside. It may be due to
- (a) Proper combustion of fuel                      (b) Improper cooking of potato curry  
(c) Improper combustion of the fuel                      (d) Burning of copper vessel
97. When a Copper vessel is exposed to moist air for long, it acquires a dull green coating. The green material is a mixture of
- (a) Copper oxide and Copper carbonate                      (b) Copper hydroxide and Copper carbonate  
(c) Copper oxide and Copper nitrate                      (d) Copper hydroxide and Copper nitrate
98. The places meant for conservation of biodiversity in their natural habitat are
- (i) Zoological garden (ii) Botanical garden (iii) Sanctuary (iv) National park
- (a) i & ii                      (b) ii & iii                      (c) iii & iv                      (d) i & iv
99. The same force 'F' acts on four different objects having the areas given below, one by one. In which case the pressure exerted will be the maximum?
- (a) 20 m<sup>2</sup>                      (b) 50 m<sup>2</sup>                      (c) 100 m<sup>2</sup>                      (d) 10 m<sup>2</sup>



100. Before playing the orchestra in a musical concert, a sitarist tries to adjust the tension and pluck the strings suitably. By doing so he is adjusting
- (a) Intensity of sound only                      (b) Amplitude of sound only  
(c) Frequency of the sitar string with the frequency of other musical instruments  
(d) Loudness of sound

### SECTION D

### SOCIAL SCIENCE

101. The Chairman of the Drafting Committee of Indian Constitution was:-  
(a) Sardar Patel    (b) Dr BR Ambedkar    (c) Dr Rajendra Prasad    (d) JL Nehru
102. By the late of 18<sup>th</sup> Century East India Company was trying to expand the cultivation of:-  
(a) Opium                      (b) Indigo                      (c) Cotton                      (d) Tea
103. **EVMs** were used for the first time in the \_\_\_\_\_ general elections.  
(a) 2001                      (b) 2002                      (c) 2003                      (d) 2004
104. There are \_\_\_\_\_ elected members in Rajya Sabha:-  
(a) 543                      (b) 272                      (c) 233                      (d) 260
105. Minerals that lie at shallow depths are taken out by removing the surface layer, this is known as:-  
(a) Open – cast mining    (b) Shaft mining    (c) Drilling    (d) All of the above
106. The complainant has a \_\_\_\_\_ right to get a free copy of the FIR from the Police:-  
(a) Fundamental                      (b) Legal                      (c) Political    (d) Economic
107. Which article of the constitution states that **untouchability** has been abolished:-  
(a) Article 14    (b) Article 15    (c) Article 16    (d) Article 17
108. The Marathi newspaper **Kesari** was edited by:-  
(a) Bipin Chandrapal                      (b) Bal Gangadhar Tilak  
(c) Sarojini Naidu                      (d) Lala Lajpat Rai
109. The difference between the birth rate and the death rate is called the:-  
(a) Natural growth rate                      (b) Normal growth rate  
(c) Actual growth rate                      (d) None of the above



110. Dandi March was against the:-  
 (a) Salt Tax (b) Purna Swaraj  
 (c) Non co-operation movement (d) Simon commission
111. The British East India Company got a charter from Queen Elizabeth-I in  
 (a) 1600 AD (b) 1599 AD (c) 1601 AD (d) 1700 AD
112. Delhi Renaissance refers to the period from  
 (a) 1830 - 1857 AD (b) 1857 - 1885 AD  
 (c) 1825 - 1857 AD (d) None of these.
113. Woods Dispatch of 1854 refers to  
 (a) Educational Reform (b) Financial Reform  
 (c) Forest Reform (d) None of these
114. The leader of the ruling party in Lok Sabha is  
 (a) The Prime Minister (b) The President  
 (c) The Vice President (d) The Leader of Opposition
115. As per which article of the Indian Constitution every arrested person is guaranteed Fundamental Rights  
 (a) Article 20 (b) Article 21 (c) Article 23 (d) Article 22
116. Which of the following gas was released in Bhopal Gas Tragedy?  
 (a) Methyl Isocyanite (b) Ethyl Isocyanate  
 (c) Methyl Alcohol (d) Ethyl Alcohol
117. Which one of the following is a leading producer of Copper in the world?  
 (a) Bolivia (b) Chile (c) Ghana (d) Zimbabwe
118. Identify the state with "Lowest literacy" as per census 2011.  
 (a) Bihar (b) Haryana (c) Rajasthan (d) Gujarat.
119. The total number of Anglo Indians nominated to the Loksabha is  
 (a) 8 (b) 6 (c) 4 (d) 2
120. Which one of the following countries has the highest percentage of forest land?  
 (a) Australia (b) India (c) France (d) Japan



121. Who was the founder of the 'Brahmo Sabha'?
- (a) Annie Besant (b) Bala Gangadhar Tilak  
(c) Rajaram Mohan Roy (d) Eswar Chandra Vidyasagar
122. Child marriage restraint Act was passed in the year \_\_\_\_\_
- (a) 1829 (b) 1909 (c) 1919 (d) 1853
123. What is a population pyramid?
- (a) A graphical presentation of the age, sex composition of a population.  
(b) When the population density of an area is so high that people live in tall buildings.  
(c) Pattern of population distribution in large urban areas.  
(d) Pattern of population distribution in rural areas.
124. Which age group of India is guaranteed free education by the Constitution?
- (a) 6-14 years (b) 5-13 years (c) 7-14 years (d) 6-12 years
125. Who wrote the book '*Poverty and Un-British Rule in India*'?
- (a) Dadabhai Nauroji (b) Badruddin Tyabji  
(c) Pherojshah Mehta (d) Bipin Chandrapal
- \*\*\*\*\*



अखिल भारतीय सैनिक स्कूल प्रवेश परीक्षा : 2019  
ALL INDIA SAINIK SCHOOLS ENTRANCE EXAMINATION: 2019

कक्षा - IX / CLASS - IX

0023881

बौद्धिक परीक्षा प्रश्न पत्र PAPER - II INTELLIGENCE TEST : CLASS IX

समय : 30 मिनट/ Time : 30 Min

अंक : 50/Max. Marks: 50

पूरा नाम/ Name in Full ..... अनुक्रमांक/ Roll No. ....

---

निर्देश

INSTRUCTIONS

1. This paper contains 25 questions of 2 marks each.  
इस प्रश्न पत्र में 25 प्रश्न हैं, प्रत्येक प्रश्न के लिए 2 अंक हैं।
  2. Answer all questions. Write your answer in OMR Answer sheet.  
सभी प्रश्नों के उत्तर देने हैं। अपना उत्तर ओ.एम.आर उत्तर पत्रक में लिखें।
  3. There are total 8 pages in the question paper.  
इस प्रश्न पत्र में 8 पृष्ठ हैं।
-



ILLUSTRATION SET/ सोदाहरण समूह

जिस प्रकार के प्रश्न आपको परीक्षा में मिलेंगे उससे सम्बन्धित कुछ प्रश्न को उदाहरण के रूप में यहाँ नीचे प्रस्तुत किया गया है। अब इन उदाहरणों को ध्यानपूर्वक देखिए और समझिए उनको कैसे हल किया गया है।

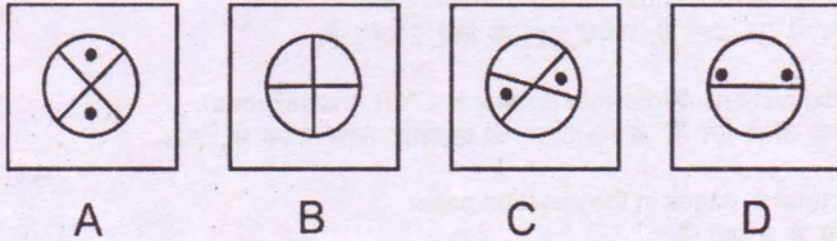
Below are given examples of the type of questions that you will find in the test. Now, look at these examples carefully and understand how they are solved.

उदाहरण १

Example 1

A. पाँच आकृतियों का एक समुच्चय (सेट) दिया गया है जिनमें से कोई चार आकृतियाँ एक समान गुण क आधार पर अपना समूह बनाती हैं और एक भिन्न हैं। आपको यह ज्ञात करना है कि उनमें से कौन सी आकृति अन्य चार आकृतियों से भिन्न है।

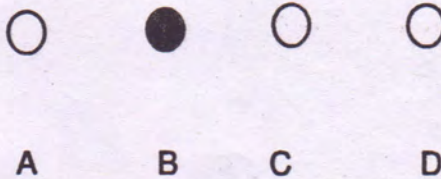
A. There are five sets of figures in which 4 share a common property and make a group whereas one of them is different. Find out which figure is different from the other four.



यहाँ ऊपर दी गयी सभी आकृतियों A, B, C, तथा D में केवल 'B' में दो काले बिन्दु दिये गये है इसलिए यह सभी एक वर्ग से सम्बन्धित हैं। जबकि आकृति 'B' में कोई काला बिन्दु नहीं है। अतः विकल्प 'B' सही उत्तर है, जो कि उत्तर वाले खाने में लिखा गया है।

Out of the above figures A, B, C, & D except figure 'B' all figures have two black dots in the figure and thus form one group. Figure 'B' stands out as it does not have any black dot in it. So, the right answer is 'B' which is written in the OMR sheet as given below

Answer is



ठीक इसी रूप में अक्षरों अथवा संख्या पर आधारित प्रश्न आपका मिलेंगे जो कि अपने वर्ग से भिन्न है। समस्याओं में दिये गये तर्क को समझते हुए कि यह किस प्रकार एक समान है, इसको हल करने का प्रयास करें।



In a similar manner you may be asked to choose the set of alphabets or number which differ from their group. Try to understand the logic how they are grouped and solve the problem.

उदाहरण २  
**Example 2**

B. नीचे कुछ संख्याएँ एक व्यवस्थित क्रम में एक निश्चित श्रृंखला के रूप में दी गयी हैं लेकिन उनमें से एक संख्या छूटी हुई है। नीचे दिये गये विकल्पों में से आपको उस एक विकल्प को चुनना होगा जो कि उस श्रृंखला को पूरा करेगा।

B. Given below, some numbers are arranged in a particular sequence but one of the number is missing. Find the missing number from the given choices to complete the series.

21 31 41 51.....

- (A) 81                      (B) 51                      (C) 61                      (D) 71

ऊपर दी गयी श्रृंखला में पहली संख्या से दूसरी संख्या के बीच दस अंकों का अन्तर है इसलिए श्रृंखला को पूरा करते हुए रिक्त स्थान पर 51 की संख्या आएगी। अतः विकल्प 'B' सही उत्तर है जो कि उत्तर वाले खाने में लिखा गया है।

In the above series, there is a gap of ten numbers between the first number and the second consecutive number. To continue the series, the missing number would be **61**. Therefore choice 'B' is the correct answer to be written in the given OMR sheet, as given below.

Answer is



A                      B                      C                      D

Answer is

ठीक इसी रूप में अक्षरों, संख्या अथवा आकृतियों से सम्बन्धित श्रृंखला को पूरा करने वाले प्रश्न आपसे पूछे जाएंगे जिनमें दिये गये विकल्पों में से किसी एक को चुनना होगा। आपको दी गयी श्रृंखला को समझकर समस्या का समाधान करना होगा।

In a similar manner you may be asked to choose the set of given options to complete the series for alphabets or figures. You have to grasp the sequence logic and solve the given problems.



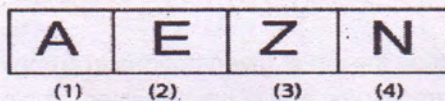
**Directions :**

**Choose the letters group that best represents a relationship similar to the one expressed in the original pair of letters group :-**

126. MONKEY: XDJMNL:: TIGER : ?  
(a) QDFHS            (b) SDFHS            (c) SHFDQ            (d) UJHFS
127. MAD is to JXA as RUN is to  
(a) ORX            (b) OSQ            (c) PRJ            (d) UXQ
128. Kilometer is to Distance as Poundal is to  
(a) Density            (b) Acceleration            (c) Momentum            (d) Force

**Directions: Which number complete the second pair in the same way as the first pair**

129. 20: 11:: 102 :?  
(a) 49            (b) 52            (c) 61            (d) 98
130. 13: 25:: 48 : ?  
(a) 95            (b) 97            (c) 109            (d) 105
131. Tiff is to Battle as Frugal is to  
(a) Sprint            (b) Vague            (c) Miserly            (d) Vital
132. A is 40 m South-West of B. C is 40 m South-East of B. Then C is in which direction of A  
(a) East            (b) West            (c) North-East            (d) South
133. Choose the figure, which is different from others



- (a) 1            (b) 2            (c) 3            (d) 4



134. If ENGLAND is written as 1234526 and FRANCE is written as 785291. How is GREECE coded?

- (a) 381171                      (b) 831191                      (c) 832252                      (d) 835545

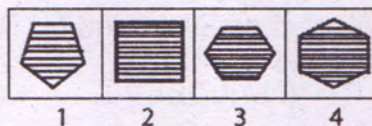
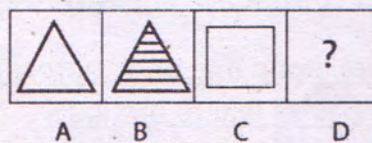
135. Which word can't be formed by using the letters of the INTELLIGENCE word? Find that word.

- (a) TILLAGE                      (b) INCITE                      (c) GENTLE                      (d) NEGLECT

136. If + means divide, divide means -, - means X, X means + then  $12+6/3-2 \times 8 = ?$

- (a) 2                                  (b) 4                                  (c) 8                                  (d) 5

137. Select the figure from the answer set that would come in place of the question mark (?)



- (a) 1                                  (b) 2                                  (c) 3                                  (d) 4

138. A Cube painted blue on all the faces is cut into 125 cubes of equal size. Then, how many cubes are not painted on any face?

- (a) 8                                  (b) 16                                  (c) 27                                  (d) 54

139. If 1<sup>st</sup> October is Sunday, then 1<sup>st</sup> November will be

- (a) Tuesday                      (b) Friday                      (c) Wednesday                      (d) Thursday

140. Find the missing number in the box

0	3	8
15	24	35
48	?	80

- (a) 64                                  (b) 63                                  (c) 66                                  (d) 84

141. Which one set of letters when sequentially placed at the gaps in the given letter series shall complete it?

ac\_cab\_baca\_aba\_aca\_

- (a) acbcc                      (b) aacbc                      (c) babbb                      (d) bcbba



**Directions:-** (Q. 142-145) In each of the following questions, Find the word which cannot be made from the letters of the given word.

142. REPUBLICAN

- (a) CLIP                      (b) PURE                      (c) ANKLE                      (d) BANE

143. ESTRANGE

- (a) GENERATE                      (b) SERGEANT                      (c) REAGENTS                      (d) GREAT

144. ADMINISTRATOR

- (a) ADMIT                      (b) NEST                      (c) MANTA                      (d) ROAD

145. SOCIALISATION

- (a) SCOUT                      (b) CLASS                      (c) LIAISON                      (d) ASSOCIATION

**Directions:-** (Q. 146-147) Choose the letters group that best represents a relationship similar to the one expressed in the original pair of letters groups:-

146. If LONDON is coded as MPOEPO. What code is needed for DELHI ?

- (a) DEHLI                      (b) EFIMJ                      (c) HLDEI                      (d) EFMIJ

147. PNS : OOT :: DBH : ?

- (a) PPI                      (b) BBI                      (c) CCI                      (d) DDB

**Directions:-** (Q. 148-150) In the given series, find the next/missing term/number.

148. MNOABCPQRDEFST??

- (a) GK                      (b) UV                      (c) GH                      (d) UG

149. AZ, CX, EV, ?

- (a) HT                      (b) HU                      (c) GS                      (d) GT

150. YX, UTS, ONML, ?

- (a) FEDCB                      (b) GFEDC                      (c) IHGFE                      (d) HGFED

\*\*\*\*\*